

7/15/20/30/40KW DC EV CHARGER

Product Specification

Product model: SC07750G SC07750E SC07750A SC07750J
SC15750HG SC15750HE SC15750HA SC15750HJ
SC20750HG SC20750HE SC20750HA SC20750HJ
SC201KHG SC201KHE SC201KHA SC201KHJ
SC30750HG SC30750HE SC30750HA SC30750HJ
SC301KHG SC301KHE SC301KHA SC301KHJ
SC40750HG SC40750HE SC40750HA SC40750HJ
SC401KHG SC401KHE SC401KHA SC401KHJ

Version: V1.2

Date: 2023-01-18

Catalogue

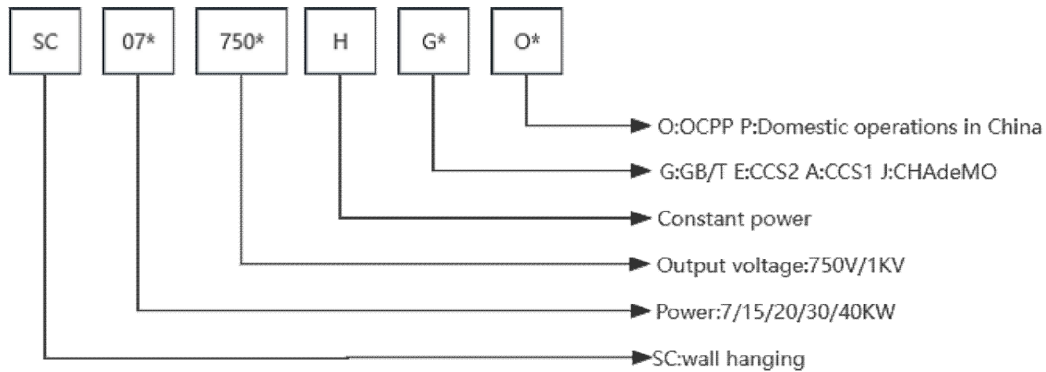
1.Overview.....	2
2.Safety instructions.....	3
3.Appearance and Composition.....	3
4.Installation diagram.....	4
5.Detailed technical parameters.....	4
6.Instructions for.....	9
7.Precautions for Use.....	13
8.The appendix.....	14

1.Overview

1.1 Introduction

Dear customer, thank you for using the DC charger produced by our company . We sincerely hope that this product can meet your requirements, and look forward to your more valuable comments on the performance and function of the product. We will continue to improve and improve the quality of the product.

1.2 Product model explanation:



2.Safety instructions

Charging operation shall follow the operation instructions provided by the company;

Non-professionals are strictly prohibited to open the charging machine cabinet at will; Do not disassemble or assemble without permission;

When stopping midway, manually click the button to stop and then pull out the charging gun;

It is strictly forbidden to insert and remove the charging gun head directly in the charging process, otherwise it will burn out the charging gun head and charger;

Any operation unrelated to charging is prohibited in the charging process, and other operations can be carried out only when the charging gun head is disconnected from the car and the charger button is clicked to stop.

Avoid fireworks (open fire) near the charger and pay attention to ventilation;

The fuse must be replaced with the same type of product, not with copper, iron wire replacement;

There is high voltage in the charger, and any fault should be repaired by professional personnel to avoid danger;

The superior circuit breaker and distribution device of the charger shall be selected, installed and operated by professional electrical personnel;

In severe weather such as thunderstorms, you are advised to disconnect the power supply. If water accumulates in the charger, contact the personnel of the manufacturer to handle the water before continuing to use the charger.

The unit weight of the charging gun cable is large, and the long cable is easy to drag force in the actual charging process, which is not conducive to releasing the twisting force, increasing the risk of cable distortion and bulge, and affecting the service life of the product. Therefore, do not pull or twist the charging cable. The cable of the charging gun must be smoothed and not twisted to force the charging gun holder during use.

Do not shake the charging gun from side to side when inserting or removing the charging gun. Insert and remove the charging gun vertically.

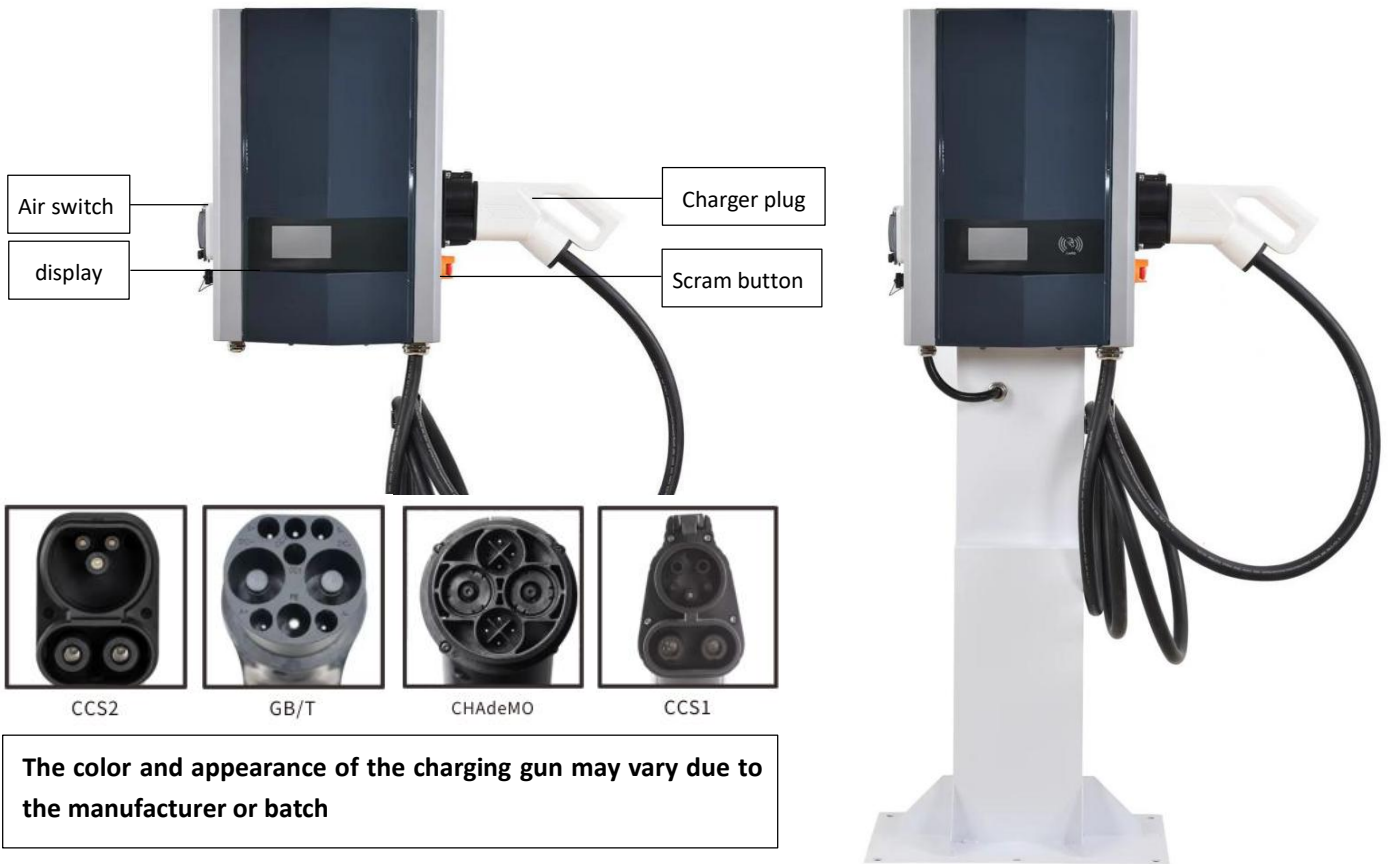
If any of the following conditions occur, please turn off the power in time and notify professional personnel for repair:

- Abnormal sound appears inside the charger;
- Odor or smoke from inside the charger;
- No display or response on the charger screen;
- The charger has an unrecoverable fault alarm;



Note: Before powering on and running, ensure that the equipment shell is effectively connected to the earth, otherwise there may be electric shock risk!

3.Appearance and Composition



4.Installation diagram

Wall mounting



1. when you open the carton box



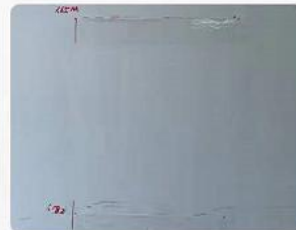
2. take the charger
Unscrew the two white board



3. after unscrew the wall board



4. installation accessories shown in the pics



5. note size on the wall
interval 46.8cm between the two wall board
stick the paster like the picture



6. drill hole,insert the screw



7. after hang the wall
please tighten the screws



8,alignment the hole to hang the charger on the wall,tighten the screws

5.Detailed technical parameters

7KW

Model	SC07750
INPUT	
Voltage range	90-265Vac, 220V(Rated)
Working frequency	45-65HZ
The power factor	≥0.99
Input current	32A
Auxiliary source	GB/T:12V 24V OPT CCS CHAdeMO:12V
OUTPUT	
Power	7KW
Voltage range	200-750Vdc
Output current	0-20A
Charging plug cable length	5M
The work environment	
Temperature range	-20~50℃; 25℃ (type)
Humidity range	5~90RH%; (non-condensation)
The altitude	2000M
Storage environment	
Temperature range	- 40 ~ 85℃; 25℃ (type)
Humidity range	5~95RH%; 25RH%(type); (non-condensation)
The altitude	2000M
Dimensions and protection	
Machine size(mm)	548*378*160mm
Packing size(mm)	Carton:790*610*380mm Wooden box:790*610*470mm
Carton packing/weight	Carton weight 32kg, Wooden case weight 41kg
	The weight mentioned above is reference weight for standard configuration only. If the weight will increase due to the addition of accessories, the actual weight shall prevail
IP	IP54
OTHER	
The human-computer interaction	4.3 "color touch screen
Charging mode	Plug and play/OCPP/Credit card/password/reservation/offline billing /APP WIFI+ Bluetooth
Charger standard	GB/T: GB/T 18487 、 GB/T 20234、 GB/T 27930
	CCS: EN61851、 EN62196、 ISO15118、 DIN70121
	CHAdeMO: CHAdeMO

15KW

Model	SC15750
INPUT	
Voltage range	260-475Vac,380V(Rated)
Working frequency	45-65HZ
The power factor	≥0.99
Input current	30A
Auxiliary source	GB/T:12V 24V OPT CCS CHAdeMO:12V
OUTPUT	
Power	15KW
Voltage range	200-750Vdc
Output current	0-37.5A
Charging plug cable length	5M
The work environment	
Temperature range	-20~50℃; 25℃ (type)
Humidity range	5~90RH%; (non-condensation)
The altitude	2000M
Storage environment	
Temperature range	- 40 ~ 85℃; 25℃ (type)
Humidity range	5~95RH%; 25RH%(type); (non-condensation)
The altitude	2000M
Dimensions and protection	
Machine size(mm)	642*454*153mm
Packing size(mm)	Carton:790*610*380mm Wooden box:790*610*470mm
Carton packing/weight	Carton weight 41kg, wooden case weight 59kg
	The weight mentioned above is reference weight for standard configuration only. If the weight will increase due to the addition of accessories, the actual weight shall prevail
IP	IP54
OTHER	
The human-computer interaction	4.3 "color touch screen
Charging mode	Plug and play/OCPP/Credit card/password/reservation/offline billing /APP WIFI+ Bluetooth
Charger standard	GB/T: GB/T 18487 、 GB/T 20234、 GB/T 27930
	CCS: EN61851、 EN62196、 ISO15118、 DIN70121
	CHAdeMO: CHAdeMO

20KW

Model	SC20750	SC201K
INPUT		
Voltage range	260-475Vac,380V(Rated)	
Working frequency	45-65HZ	
The power factor	≥0.99	
Input current	32A	
Auxiliary source	GB/T:12V 24V OPT CCS CHAdeMO:12V	
OUTPUT		
Power	20KW	
Voltage range	200-750Vdc	200-1000Vdc
Output current	0-50A	
Charging plug cable length	5M	
The work environment		
Temperature range	-20~50℃; 25℃ (type)	
Humidity range	5~90RH%; (non-condensation)	
The altitude	2000M	
Storage environment		
Temperature range	- 40 ~ 85℃; 25℃ (type)	
Humidity range	5~95RH%; 25RH%(type); (non-condensation)	
The altitude	2000M	
Dimensions and protection		
Machine size(mm)	642*454*153mm	
Packing size(mm)	Carton:790*610*380mm Wooden box:790*610*470mm	
Carton packing/weight	Carton weight 45kg, wooden case weight 64kg	
	The weight mentioned above is reference weight for standard configuration only. If the weight will increase due to the addition of accessories, the actual weight shall prevail	
IP	IP54	
OTHER		
The human-computer interaction	4.3 "color touch screen	
Charging mode	Plug and play/OCPP/Credit card/password/reservation/offline billing /APP WIFI+ Bluetooth	
Charger standard	GB/T: GB/T 18487 、 GB/T 20234、 GB/T 27930	
	CCS: EN61851、 EN62196、 ISO15118、 DIN70121	
	CHAdeMO: CHAdeMO	

30KW

Model	SC30750	SC301K
INPUT		
Voltage range	260-475Vac,380V(Rated)	
Working frequency	45-65HZ	
The power factor	≥0.99	
Input current	60A	
Auxiliary source	GB/T:12V 24V OPT CCS CHAdeMO:12V	
OUTPUT		
Power	30KW	
Voltage range	200-750Vdc	200-1000Vdc
Output current	0-100A	
Charging plug cable length	5M	
The work environment		
Temperature range	-20~50℃; 25℃ (type)	
Humidity range	5~90RH%; (non-condensation)	
The altitude	2000M	
Storage environment		
Temperature range	- 40 ~ 85℃; 25℃ (type)	
Humidity range	5~95RH%; 25RH%(type); (non-condensation)	
The altitude	2000M	
Dimensions and protection		
Machine size(mm)	642*454*153mm	
Packing size(mm)	Carton:790*610*380mm Wooden box:790*610*470mm	
Carton packing/weight	Carton weight 61kg, wooden case weight 69kg	
	The weight mentioned above is reference weight for standard configuration only. If the weight will increase due to the addition of accessories, the actual weight shall prevail	
IP	IP54	
OTHER		
The human-computer interaction	4.3 "color touch screen	
Charging mode	Plug and play/OCPP/Credit card/password/reservation/offline billing /APP WIFI+ Bluetooth	
Charger standard	GB/T: GB/T 18487 、 GB/T 20234、 GB/T 27930	
	CCS: EN61851、 EN62196、 ISO15118、 DIN70121	
	CHAdeMO: CHAdeMO	

40KW

Model	SC40750	SC401K
INPUT		
Voltage range	260-475Vac,380V(Rated)	
Working frequency	45-65HZ	
The power factor	≥0.99	
Input current	67A	
Auxiliary source	GB/T:12V 24V OPT CCS CHAdeMO:12V	
OUTPUT		
Power	40KW	
Voltage range	200-750Vdc	200-1000Vdc
Output current	0-134A	
Charging plug cable length	5M	
The work environment		
Temperature range	-20~50℃; 25℃ (type)	
Humidity range	5~90RH%; (non-condensation)	
The altitude	2000M	
Storage environment		
Temperature range	- 40 ~ 85℃; 25℃ (type)	
Humidity range	5~95RH%; 25RH%(type); (non-condensation)	
The altitude	2000M	
Dimensions and protection		
Machine size(mm)	667*475*204mm	
Packing size(mm)	Carton:940*605*465 Wooden box:945*610*500	
Carton packing/weight	Carton weight 70kg, wooden case weight 80kg	
	The weight mentioned above is reference weight for standard configuration only. If the weight will increase due to the addition of accessories, the actual weight shall prevail	
IP	IP54	
OTHER		
The human-computer interaction	4.3 "color touch screen	
Charging mode	Plug and play/OCPP/Credit card/password/reservation/offline billing /APP WIFI+ Bluetooth	
Charger standard	GB/T: GB/T 18487 、 GB/T 20234、 GB/T 27930	
	CCS: EN61851、 EN62196、 ISO15118、 DIN70121	
	CHAdeMO: CHAdeMO	

6.Instructions for

6.1 Equipment installation

The charging equipment has high voltage and high current inside, in order to ensure personal safety, should always comply with the relevant regulations:

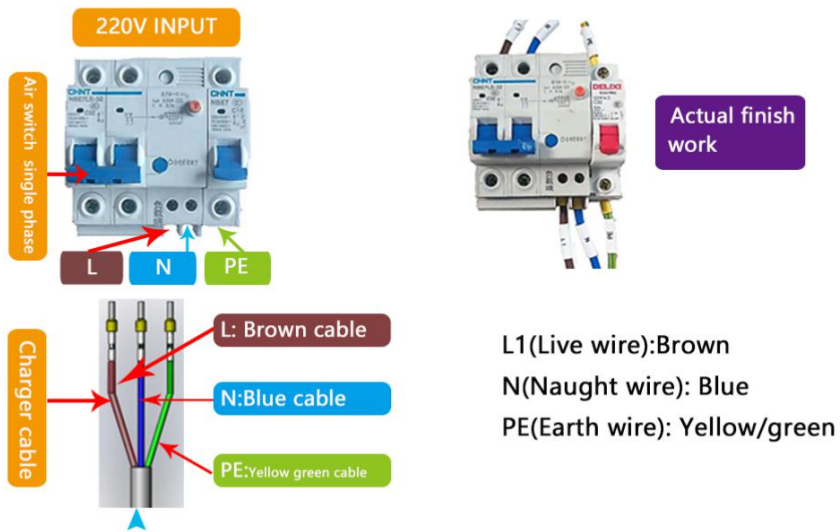
- (1) Only personnel who have received charging equipment training and fully grasp the knowledge of DC chargers can install this equipment. Safety precautions and local safety regulations should always be observed during installation;
- (2) The internal operation and maintenance of the charger cannot be carried out in thunderstorm weather or relatively humid weather to prevent electric shock;
- (3) If operating inside the charger, ensure that the equipment is not charged.

6.2 Wiring instructions

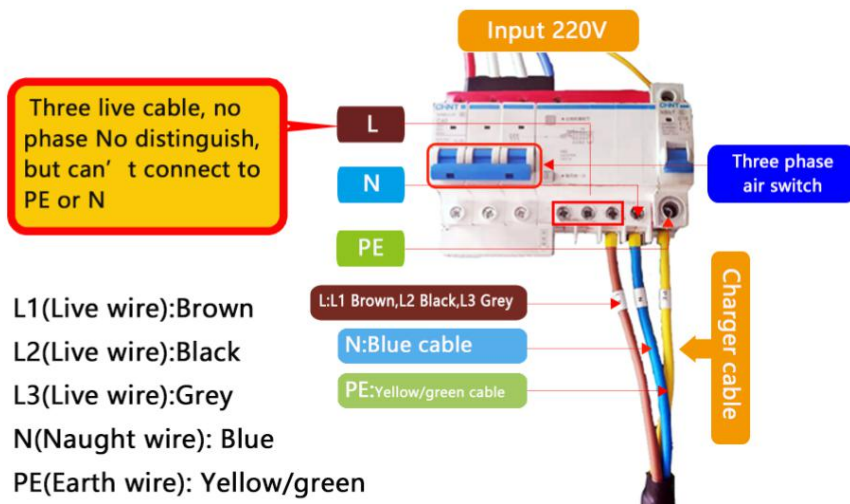
Input cable model reference

Product mode	Input cable		
	Cable	Postion	Specification
7kw	AC single phase A	Plastic-case circuit breaker L1	≥6mm ²
	AC input N	Plastic-case circuit breaker N	≥6mm ²
	AC PE	Wire bar	≥6mm ²
15kw 20kw	AC three phases A	Plastic-case circuit breaker L1	≥6mm ²
	AC three phases B	Plastic-case circuit breaker L2	≥6mm ²
	AC three phases C	Plastic-case circuit breaker L3	≥6mm ²
	AC input N	Plastic-case circuit breaker N	≥6mm ²
	AC PE	Wire bar	≥6mm ²
30kw	AC three phases A	Plastic-case circuit breaker L1	≥10mm ²
	AC three phases B	Plastic-case circuit breaker L2	≥10mm ²
	AC three phases C	Plastic-case circuit breaker L3	≥10mm ²
	AC input N	Plastic-case circuit breaker N	≥6mm ²
	AC PE	Wire bar	≥6mm ²
40kw	AC three phases A	Plastic-case circuit breaker L1	≥16mm ²
	AC three phases B	Plastic-case circuit breaker L2	≥16mm ²
	AC three phases C	Plastic-case circuit breaker L3	≥16mm ²
	AC input N	Plastic-case circuit breaker N	≥10mm ²
	AC PE	Wire bar	≥10mm ²
<p>The cable selection in the table is for reference only, and should be determined by the contractor with power construction qualification according to the actual situation, laying length, laying environment and other factors</p>			

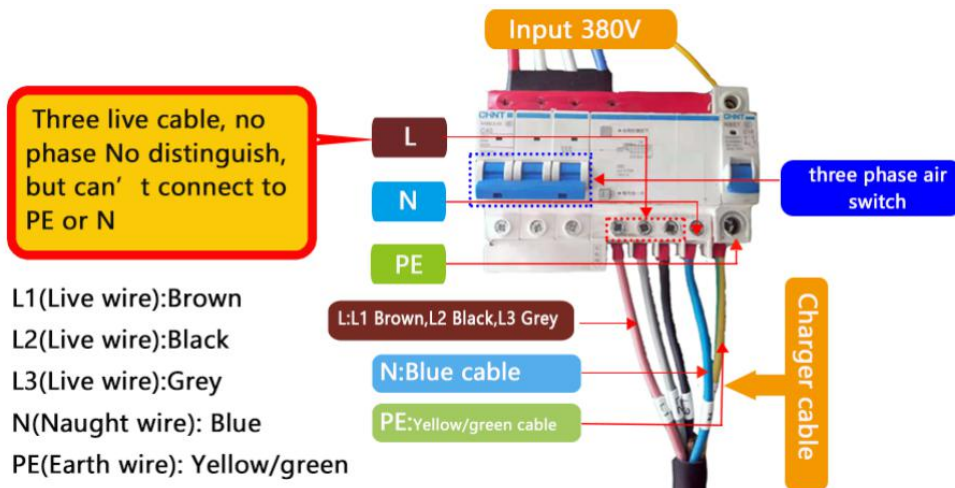
Single-phase 2P switch connection method(7KW)



Single-phase 3P switch connection method(7KW)



Three-phases 3P switch connection method(15-20-30-40KW)



6.3 charger



Step 1: Plug in the charging connector



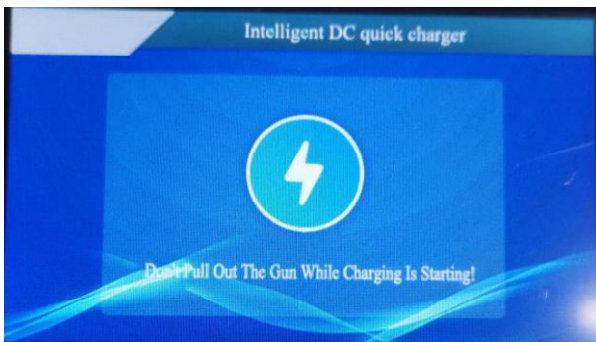
Step 2: Switch the input line to ON



Step 3: Turn ON the back of the charger to ON



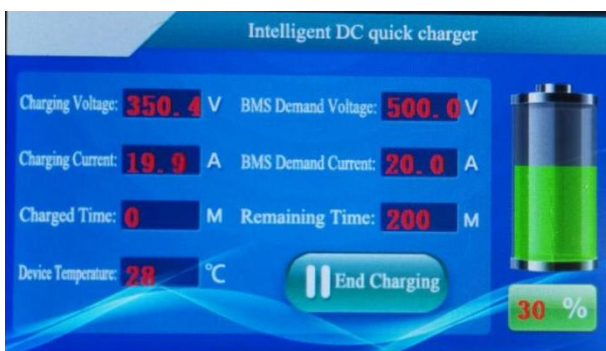
Step 4: Welcome charging interface



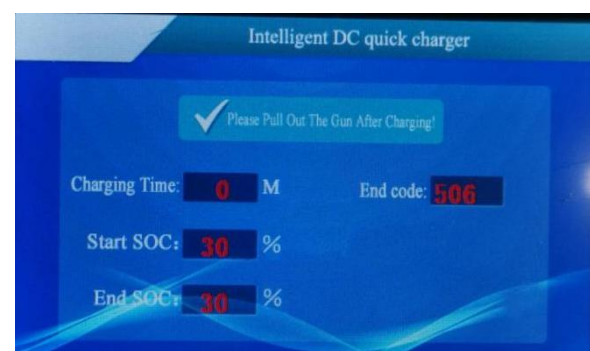
Step 5:connecting



Step 6: Enter the start up interface

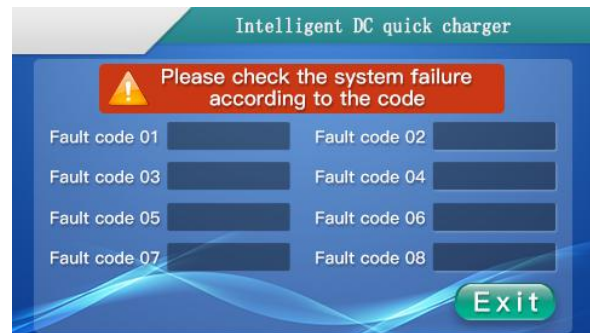


Step 7: Charging interface



Step 8: Charge finished, draw gun, charge completed

6.4 Fault display interface



6.5 Routine maintenance table

Check the content	Check the method	Maintenance cycle
General operating status and environment of the system	<ol style="list-style-type: none"> 1. Observe whether the components, circuit and device structure of the charger are damaged or deformed; 2. Listen to whether there is any abnormal sound when the charger is running; 3. Check whether the data display on the touch screen is normal. 4. Check whether the switch, contactor, circuit breaker, and fan are normal. 5. Check whether the heat of the charger shell is normal; 6. Observe whether the inlet and outlet air is normal; 7. Check the humidity and dust around the charger. <p>Attention! Intake ventilation must be checked. If the module is not cooled effectively, it will fail due to overheating.</p>	Once every six months
System clean	<ol style="list-style-type: none"> 1. Check the cleanliness of circuit boards and components; 2. Check the temperature and dust of the internal charging module. Remove the module and clean it if necessary. 	Once every six months to once a year (depending on the dust content of the environment)
Power circuit connection	<ol style="list-style-type: none"> 1. Check whether the power cable and control cable are damaged, especially whether the skin in contact with the metal surface is cut; 2. Check whether the insulation bandage of the power cable wiring terminal is off. 	Six months after the first commissioning, and then once every six months to a year
Cooling fan maintenance and replacement	<ol style="list-style-type: none"> 1. Check whether there are cracks in fan blades; 2. Listen to whether there is abnormal vibration sound when the fan is running; 3. Replace the fan in time if it is abnormal. 	Once a year
Circuit breaker maintenance	<ol style="list-style-type: none"> 1. Check the corrosion of all metal components regularly (every six months); 2. Annual inspection of contactor to ensure good mechanical operation. 	Once every six months to a year
Safety features	<ol style="list-style-type: none"> 1. Check the function of emergency stop button and stop button; 2. Simulated shutdown. 	Once every six months to a year

7. Precautions for Use

7.1 In the normal charging process, it is strictly forbidden to plug or remove the charging gun with electricity;

7.2 To end charging, you must first press the "Start/Stop" button, pull the gun, and then disconnect the charger to disconnect the mains;

7.3 Do not pull the locked gun out of the socket by brute force to avoid conductive materials such as metal foreign bodies entering the device.

7.4 Non-professionals do not open the charger shell to avoid damage to the charger;

7.5 Pay attention to the BMS power supply voltage of 12V or 24V, and select the corresponding charging model number.

7.6 The charger is equipped with a standard input cable. Users need to connect an external circuit breaker to ensure that the input PE cable is reliably grounded.

- 7.7 Only when the input power distribution capacity is not less than the rated power of the charger, can the charger be charged at full power.
- 7.8 Dc charging gun is standard, no need to install it separately;
- 7.9 Indoor drying is forbidden to be used in rainwater environment;
- 7.10 If there is a heat source near the charger, please move it as far as possible and take the surrounding space into full consideration to facilitate heat dissipation;
- 7.11 Avoid steam, dust and metal dust;
- 7.12 Keep away from flammable, explosive and corrosive gases and liquids;
- 7.13 Stay away from electromagnetic interference sources.

8.The appendix

8.1Quality assurance

During the warranty period, the company will repair or replace new products free of charge. During the warranty period, the company requires customers to show the invoice and date of purchase. At the same time, the trademark on the product should be clearly visible, otherwise the right not to give quality assurance. The unqualified products after replacement shall be handled by our company. Customer shall allow company reasonable time to repair faulty equipment.

The company reserves the right not to guarantee quality in the following cases:

- The whole machine and parts have exceeded the free warranty period
- Transportation damage
- Incorrect installation, modification, or use
- Outdoor charging in rainy days leads to water inflow damage of charging pile.
- Extremely harsh operating conditions beyond those specified in this manual
- Machine failure or damage not caused by installation, repair, alteration or disassembly by our service personnel
- Failure or damage of the machine caused by non-standard use or not confirmed by the company
- Any beyond the scope of use specified in the relevant national standards
- Damage caused by abnormal natural conditions



Non-company personnel are prohibited to open the charging equipment, such as personal accidents, property accidents, safety accidents caused by this has nothing to do with the company.

In case of product failure caused by the above situation, if the customer requires maintenance service, the company can provide paid maintenance service after the judgment of the service organization.

Precautions

The company does not assume any responsibility for the loss caused by the configuration software products provided with the products.

Any use of any or all of the data in the firmware or software developed by the company for commercial purposes is prohibited.

It is forbidden to decompile, decrypt or destroy the original program design of the software developed by the company.

Diagram of the concrete foundation for the column

